

PEDAL POUCH UNITS

These individual pedal pouches extend the range of the time-proven Reisner Direct Valve Actions into the 16' octave. The integrated DVA primary provides fast and quiet operation. They are designed for easy two-screw installation over a single 5/8" Ø exhaust hole. A paper mounting template is provided for each size.

Size	Valve	O.A. W x L x H
PPA-1	2"	4-1/4" x 5-7/8" x 4-3/8"
PPA-2	2-1/2"	5" x 6-5/8" x 4-3/8"
PPA-3	3"	5-3/4" x 7-3/8" x 4-3/8"
PPA-4	3-1/2"	6-3/4" x 8-5/8" x 3-3/8"
PPA-5	4"	7" x 8-5/8" x 3-3/8"

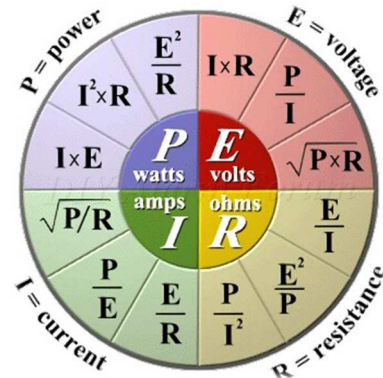
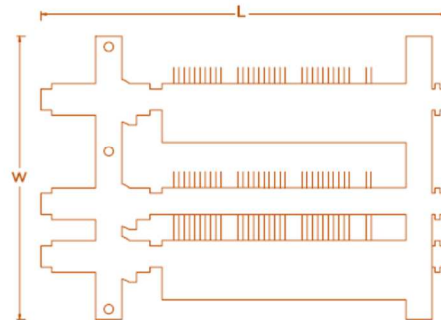
SWITCHES

The all-electric Reisner switch provides a compact, efficient and reliable means to handle all organ switching functions using standard electro-mechanical methods. The design includes all metal, electro-plated frame with self-lubricating Celcon hinges at the ends of movable bars. Square sterling silver contacts, rated at 0.5 amperes at 15 VDC, are mounted on a movable bar, providing good wiping action against round silver buss bars. Contact blocks are individually replaceable. Switches are available with 10 to 120 contacts, singly or ganged and mounted, configured per specifications. The 30 ohm adjustable magnet operates on 10-15 VDC. Wiring guides provided for switch fingers and buss bars. Single switch is 3" W x 3-5/8" H. 8-1/2" to 19" length is determined by number of contacts.



Typical Ganging Chart

Starting Pitches	Manual Position	Pedal Position
32'	16'	1-32
21-2/3'	10-1/3'	8-39
16'	8'	13-44
12-4/5'	6-2/5'	5-65
10-2/3'	5-1/3'	8-68
8'	4'	13-73
6-2/5'	3-1/5'	17-77
5-1/3'	2-2/3'	20-80
4'	2'	25-85
3-1/5'	1-3/5'	29-89
2-2/3'	1-1/3'	32-92
2'	1'	37-97
1-3/5'		41-101
1-1/3'		44-104
1'		49-109

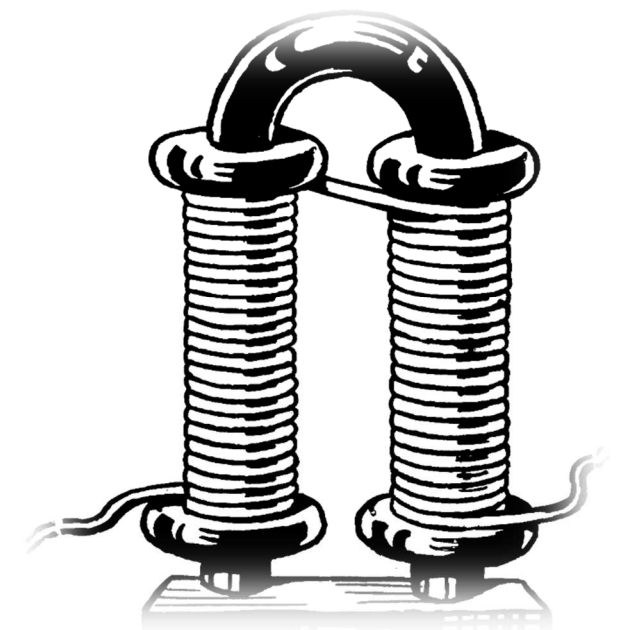


Ohms Resistance	Current Requirements Amperage Consumption At Designated Voltage		
	10V	12V	15V
30	0.33	0.40	0.50
40	0.25	0.30	0.37
60	0.16	0.20	0.25
70	0.14	0.17	0.21
90	0.11	0.13	0.17
120	0.08	0.10	0.13
150	0.06	0.08	0.10
200	0.05	0.06	0.07
300	0.03	0.04	0.05

Wire sizes and voltage drops corresponding to ampere load and distance from rectifier to organ Twelve (12) Volt Rectifier.

Amperes	Actual Distance	Total Wire Length	Wire Size	Volt Drop
10	25 Ft.	50 Ft.	12	0.79
10	50 Ft.	100 Ft.	10	1.00
10	100 Ft.	200 Ft.	6	0.71
10	200 Ft.	400 Ft.	4	0.99
20	25 Ft.	50 Ft.	10	1.00
20	50 Ft.	100 Ft.	6	0.71
20	100 Ft.	200 Ft.	4	0.99
20	200 Ft.	400 Ft.	1	1.03
30	25 Ft.	50 Ft.	8	0.94
30	50 Ft.	100 Ft.	4	0.75
30	100 Ft.	200 Ft.	2	0.94
30	200 Ft.	400 Ft.	00	0.97
40	25 Ft.	50 Ft.	6	0.71
40	50 Ft.	100 Ft.	4	0.99
40	100 Ft.	200 Ft.	1	1.03
40	200 Ft.	400 Ft.	000	1.03
50	25 Ft.	50 Ft.	6	0.99
50	50 Ft.	100 Ft.	2	0.78
50	100 Ft.	200 Ft.	0	1.01
50	200 Ft.	400 Ft.	0000	1.02

REISNER ELECTRO MAGNETS



REISNER CHEST MAGNETS

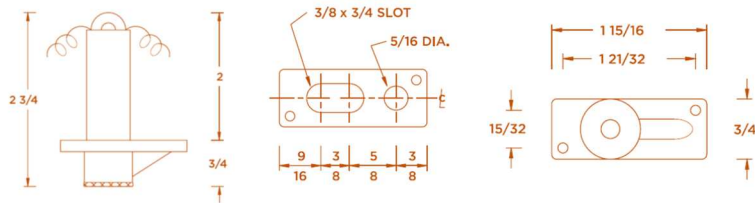
For over three quarters of a century the Reisner chest magnet has been the standard of the industry. It is undeniably the finest and most widely used magnet built for electro-pneumatic chests. Reisner chest magnets are offered in several versions for differing applications. All are dimensionally interchangeable, have die-cast bodies with precision wound 12-16 VDC coils wrapped for protection and are terminated with 6" stranded and tinned leads. Two mounting holes accept No. 4 x 5/8" screws. Coils for 24 VDC operation are available.

REISNER STANDARD CHEST MAGNETS

The standard chest magnets are available with plain or adjustable ports and with a variety of coil ohmages. These magnets operate well in vertical or horizontal position. Armatures for chest magnets and adjustable DVAs are electro-plated iron. The top side of each armature is paper gasketed to seal against the base cap, the bottom smooth surface seals against a resilient gasket mounted in the base. The aluminum base cap is available with a 0.234" Ø, 0.188" Ø, or 0.125" Ø port for various wind pressure applications. The adjustable 0.150" Ø screw port is available to regulate armature travel for high pressure use.

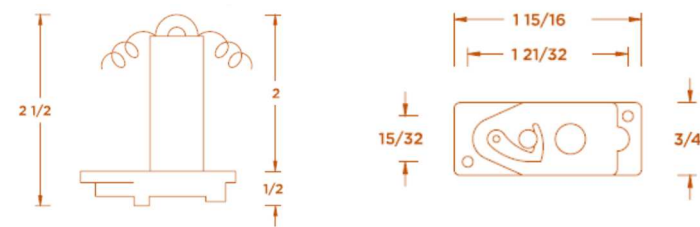
Exhaust Port	Wind Pressure
0.234" Ø	To - 6"
0.188" Ø	6" - 8"
0.125" Ø	8" - Up

Standard 12-16 VDC operation magnets offered in 90, 125 and 150 ohmages. 300 Ohm Magnets available for 24 VDC operation.



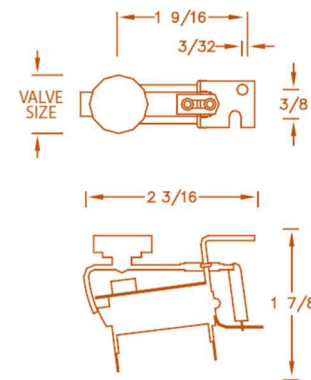
REISNER C-17 CHEST MAGNETS

The C-17 chest magnet features a flat base, special .515" diameter large armature paper gasketed on both sides, larger ports and latch-type cap. This magnet provides larger exhaust rate and is easily opened for cleaning.



REISNER 601 DIRECT PALLET MAGNET

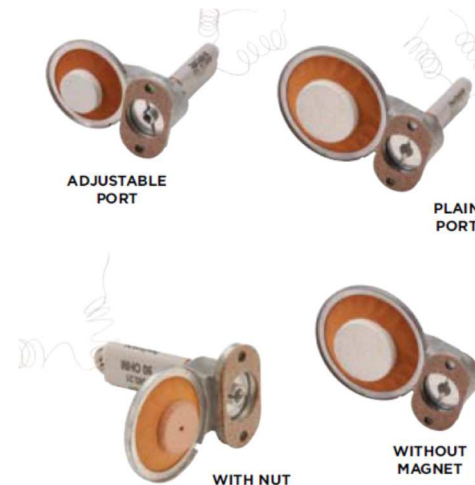
The Reisner 601 Direct Pallet Magnet is the original unit against which all other available electro-mechanical magnets are measured. With recent refinements, it is a state-of-the-art magnet. The factory-adjusted soft felt and leather valves are cemented to an aluminum valve carrier. The valve assembly is firmly attached to the armature, eliminating loose or wandering valves. The patented two-piece design of the armature hinge will not rust or bind, assuring fast and positive operation under all conditions. Adjustable spring return is centered over the armature, providing an in-line, direct pull. Electro-plated steel construction provides long life protection in a variety of climates. Two-screw mounting provides worry free installation. The precision wound coils are covered with high temperature tape and terminate in tinned solder lugs, one of which is grounded to the frame for easy connection to a common buss. Voltage range is 10-15 VDC. Coils for higher voltages and other ohmages are available. Mounts with No. 4 x 5/8" screws.



DIRECT VALVE ACTION

The rugged die-cast Reisner DVA combines a standard pouch with a built-in magnet, providing a self-contained electro-pneumatic note action. This combination delivers all the speech characteristics associated with a pipe hole opened by a pouch. Pouches are first grade pneumatic leather actuated by the dependable Reisner 90 ohm magnet. There is a 3" minimum operating pressure for plain port magnets and 4" minimum for adjustable ports. The precision-wound coils are wrapped for protection and provided with 6" stranded and tinned lead wires for 12-16 VDC operation - 10" max WP. Coils for 24 VDC operation are available. Two mounting holes accept No. 6 x 5/8" screws.

The highly versatile DVA unit is available with a leather nut in place of the valve for operation of primary valve wires. Where the magnet is mounted remote from pouch, the DVA can be provided without armature and magnet for use as a pouch unit. Releathering service is available for older leather. Pouches are provided in Tan Pneumatic leather.



601 PERFORMANCE CHARTS

Each graph line indicates the maximum pressure for each style of magnet at any given voltage. Satisfactory operation may be obtained with any combination of voltage and pressure below the line of the selected magnet.

Five (5) stock magnets of each valve size and coil resistance were installed per normal practice in each test. All magnets were installed on toe holes without restriction that were 1/8" smaller than valve diameter.

Magnets were operated on a 50% on and 50% off cycle at the highest practical repetition rate. At each given voltage the pressure was increased until the magnet failed to fully open for each cycle. Of the five magnets, the one with the lowest cutoff pressure dictated the maximum pressure for the voltage for the group.

601 Performance Charts

